



Genealogical Society of Pennsylvania Newsletter

IN THIS ISSUE:

[Tribute to Donn Devine](#)

[Supplies to the Army of the Revolution](#)

[Charts, Family Trees, Group sheets](#)

[Featured Data Collection](#)

[GSP Publications](#)

[Pennsylvania Featured County](#)

[Volunteer Opportunities](#)

A MESSAGE FROM THE PRESIDENT...

Researchers need a lot to be successful in identifying and learning about ancestors. Online databases and traditional resources in libraries and archives are a must. So also, is developing the capacity to problem solve in order to determine what you need to do and where you need to go for the information you desire. To that end, our newsletter articles focus on methods, data sources, new publications, educational and training opportunities, and case studies. One avenue, however, that researchers do not always think about is involvement with other researchers. That can happen through involvement in a genealogical society or club, interaction with attendees at a conference, connecting with DNA matches- basically, a person to person connection.

I can recall finding a distant living cousin in one family line because a fellow member of a genealogy group knew what surnames were of interest to me and managed to overhear someone mention one of the more unusual surnames I was researching at a cocktail party. She inserted herself into that conversation and ended up facilitating a meeting for me that yielded lots of new information and photos. That has happened to me more than once, and I have found relatives simply through membership in genealogy groups as have many other researchers. So, think of membership in genealogy groups – national, state, county and local - and attendance at programs as an ancestor finding tool. And, by the way, volunteering within those groups is an even better tool because you work side by side with other volunteers and have more opportunities to share information about your family and your brick walls. Real help might be standing right next to you!

Carol M. Sheaffer MD, President

The GSP online newsletter

We look forward to keeping you informed by giving you dates and times of upcoming events, answering questions and being a source of information to our membership. We welcome suggestions, tips and articles.

UPCOMING EVENTS

There will be two lunch events each month – ROOTS and ROOTS FOCUS. Both are designed to allow researchers to discuss genealogy over brown bagging lunch. ROOTS will be an opportunity to discuss all questions with each other and share research, artifacts, photos and questions. ROOTS FOCUS will offer an opportunity to discuss a specific topic. Bring your lunch and GSP will provide coffee, tea and dessert

The following events are held at the GSP offices.

Genealogical Society of Pennsylvania

2100 Byberry Road, Suite 111

Philadelphia, PA 19116 -

267.686.2296 info@genpa.org

Tuesday - 9 October 2018 12 Noon-2 PM**ROOTS: Bring Your Ancestor to Lunch**

An opportunity to meet over lunch with other researchers to discuss research questions, successes, frustrations, get new ideas, share ancestor photos and artifacts

Led by Carol M. Sheaffer

Registration: GSP Members Free; Non-Members \$5

(Continued on page 2)

A TRIBUTE TO DONN J. DEVINE, CG: A GENEALOGICAL LIFE WELL LIVED



When Donn J. Devine, genealogist, retired Brigadier General of The Delaware National Guard and Delaware attorney, joined The Board of Directors of The Genealogical Society of Pennsylvania in 2008, his status as an expert genealogist was already well established, and he was held in highest esteem by colleagues everywhere. Certified as a genealogist in 1987 by The Board for Certification of Genealogists, he served as a trustee on that Board (1992-2006). He subsequently became Archivist for The Catholic Diocese of Wilmington in 1989. Donn has been an active member of The Genealogical Speakers Guild, Sons of the American Revolution, The Delaware Genealogical Society (former President), Delaware Military Heritage and Educational Foundation (Board Member Emeritus) and, of course, The Genealogical Society of Pennsylvania (member, Board of Directors).

In 2013, Donn was named a Fellow by The National Genealogical Society and has received First Place awards for his contributions to Newspapers and Journals by The International Society of Family History Writers and Editors. Additionally, Donn is listed in *Who's Who in America?* and *Who's Who in Genealogy and Heraldry*. He has contributed numerous articles to *The American Genealogist*, *The NY Genealogical and Biographical Record*, and *The Delaware Genealogical Society Journal* and has served as an editorial advisory board member as well as a contributor to *The National Genealogical Society Quarterly*. His article, entitled *Thomas, John and Francis Baldwin Chester Co, PA* was published in *The Pennsylvania Genealogical Magazine*, Vol 49 (2014), pages 102-118.

In recognition of his service to the genealogical community at large and, specifically to The Genealogical Society of Pennsylvania, The Officers and Directors of The Board, have voted to confer emeritus status. We sincerely thank you, Donn, for including The Genealogical Society of Pennsylvania in your genealogical career and life.

Carol M. Sheaffer, President,
The Genealogical Society of Pennsylvania

Carol M. Sheaffer, President,
The Genealogical Society of Pennsylvania

(Continued from page 1)

Thursday - 18 October 2018 6 PM ANCESTOR SHARE NIGHT

Bring an ancestor Artifact, Heirloom, or Photo to share. **Registration:** FREE
Led by Carol Sheaffer

Tuesday - 23 October 2018 12 Noon-2 PM

ROOTS FOCUS: Artifacts, Heirlooms, Photos
Led by Carol Sheaffer


Bring your lunch, GSP will supply coffee/tea and dessert

Registration: GSP Members Free;
Non-Members \$5

Saturday-27 October 10 AM-11:30 AM DNA SPECIAL INTEREST GROUP

DNA Discussion: Testing, Results, Use in Genealogical Research

Registration: GSP Members Free;
Non-Members \$5

 Saturday, December 8, 2018
GSP Open House

UPCOMING OFFSITE LECTURES OCTOBER 2018

Registration managed by host facility unless otherwise noted check their websites

Thursday—October 11, 2018 11 AM

Free Library of Philadelphia-Parkway
Central 1901 Vine Street,
Philadelphia, PA 19103

Beginner's Lecture Genealogy Get Ready, Get Set, Get Going!

Nancy C Nelson and Carol M. Sheaffer

RECORDS OF PENNSYLVANIA CITIZENS WHO PROVIDED SUPPLIES TO THE ARMY DURING THE REVOLUTIONARY WAR

A GSP Newsletter reader has asked about the availability of records for those who provided supplies to the Army during the Revolutionary War. Their support was so needed: food, grain, drink, blankets were all in great demand. Battles and encampments were in many places, thus making it challenging to meet the needs of soldiers in each location.

The Quartermaster department, much later known as The Quartermaster Corps, was established 16 June 1776, by the Second Continental Congress. They appointed one "Quartermaster General of the grand army and a deputy, under him, for the separate army." Major General Thomas Mifflin, the first Quartermaster general, had no money and no authority and was dependent on the individual states for help with the supplies that had to be provided. The third Quartermaster General, Major General Nathanael Greene reorganized the supply system after Valley Forge and established a depot system to support the army.

There are records available that document purchase of needed supplies in Pennsylvania. The Pennsylvania State Archives has such records, in Record Group 4, Records of The Department of The Comptroller General. Within this group, series 4.7 carries the description below:

"Commissioners of Purchases Accounts, 1780-1783. (6 boxes)

Arranged alphabetically by county. This series begins with a list of general purchases made by the army which shows the supplies purchased, their quantity, the purchaser, the merchant, the county where the transaction occurred, and the battalion or military unit. After this listing of general purchases, the rest of the files are arranged by county and show supplies and quantity purchased, the price, the vendor, the Commissioner of Purchases for each county, and detailed receipts. The counties documented are Bedford, Berks, Bucks, Chester, Cumberland, Lancaster, Northampton, Northumberland, Philadelphia City, Westmoreland, and York."

Federal records, which is at The National Archives, contain Record Group 93 in which is found Series 93.4 titled

"Records Relating To Supplies And Stores" 1775-1814 (bulk 1775-83) 9 lin. ft. Within that, for example, is Series 93.4.1 Selected volumes of the "Numbered Record Books" (1775-98) with the following description:

"Records of Quartermaster General Timothy Pickering, consisting of letters sent, 1780-87; a register of letters received, 1781; and miscellaneous accounts and receipts, 1781-83. Records of Commissary General of Military Stores and Assistant Quartermaster Samuel Hodgdon, consisting of letters sent, 1778-84; a ledger, 1777-98; receipts, 1778-89; and records of disbursements, 1780-81. Records of Capt. Charles Russell, Assistant Deputy Quartermaster, VA, 1781-82. Account book of Thomas Grant, Assistant Quartermaster, PA, 1780-83. Records of the Quartermaster General's Department, including

(Continued on page 4)

GSP NEWSLETTER

Finding your Pennsylvania Ancestors

Genealogical Society of Pennsylvania Newsletter

(Continued from page 3)

ledgers, 1776- 79; estimated requirements for quartermaster stores, 1780-93; and records of receipts and disbursements, 1780-84. Records of the Commissary General of Military Stores Department, including ordnance ledgers, 1780-85; and records of receipts and disbursements, 1780-81. Ledger of accounts of the United States with various states for military stores, 1780-83. Records of military stores issued and received, 1777-84. Quartermaster records of miscellaneous units, 1779-83. Records of accounts, Assistant Commissaries of Issues, 1776-83, 1786. Ration record, Eastern Department, 1776-77. “

There are many other collections at both the Pennsylvania Archives or National Archives level to explore. Browsing their websites will help the researcher find items of special interest to them. Seeing the actual records likely will mean a trip to the facility for in-person research.

A less common source, but very interesting, are records found in Bucks County, PA regarding collection of blankets from residents in various townships for the soldiers. These records are available in a publication by Waite and McNealy entitled Bucks County account of blankets for the Continental Army, 1777. Additional resources can be found at The David Library of The American Revolution in an online document entitled “Selected Readings on Uniforms/Supplies of the Revolutionary War”. That, by the way, is certainly the facility to visit for anyone doing any research on The Revolutionary War! www.dlar.org/

References:

- ◆ Military Records, Revolutionary War Card File. ARIAS, Pennsylvania’s Digital State Archives. (Accessed 20 September 2018). <http://www.digitalarchives.state.pa.us/archive.asp>
- ◆ Selected Readings on Uniforms/Supplies of the Revolutionary War. (Website Download) The David Library of The American Revolution. Washington Crossing, PA. (Accessed 20 September 2018).
- ◆ Waite, Frances W. and Terry A. McNealy, Editors. Bucks County account of blankets for the Continental Army, 1777. (Doylestown, PA. 1989).
- ◆ Record Group 4, The Department of The Comptroller General. The Pennsylvania State Archives, Harrisburg, PA.
- ◆ War Department Collection of Revolutionary War Records, Record Group 93: 93.4 Records Relating to Supplies and Stores. The National Archives, Washington, DC.
<http://www.digitalarchives.state.pa.us/archive.asp>

Carol M. Sheaffer, President president@genpa.org

Q&A

Do you have questions about Pennsylvania genealogy? We have answers! For example, we can answer questions such as “Where-How can I find marriage license records?” or “When did Pennsylvania start recording birth certificates?” We’ll feature the question and answer in the newsletter. Submit your questions (not family specific research) to: editor@genpa.org.

GSP NEWSLETTER

Finding your Pennsylvania Ancestors

Genealogical Society of Pennsylvania Newsletter

CHARTS, FAMILY TREES, GROUP SHEETS

Charts or diagrams, first recorded in 1800-1810, that show the relationships between people in several generations of a family are commonly described as Family or Genealogical Trees. Trees, Records, Charts and Sheets are often used interchangeably. They are a means to graphically display lineage and descendants for research purposes or as family heirlooms. The most common charts are the **Ancestral Chart** and the **Family Group Sheet**. <https://www.archives.gov/research/genealogy/charts-forms>

A **Family Group Sheet** summarizes relationships and lists their children. This form may also include dates and places of birth, baptism, marriage, death, burial, parents and sources. A Family Group Sheet is easily filed in a 3-ring binder using the husband's last name.

The **Ancestral Chart**, a pedigree chart, is compact and shows the starting individual at the left and ancestors to the right. An option for organizing an ancestral chart is to use a numbering system. Ahnentafel Numbering is an example of a numbering system used to organize and identify entries. The starting person, male or female, begins as #1. The father is #2 and the mother is #3, from this point forward all even-numbered persons are male, and all odd-numbered persons are female. The word Ahnentafel means *ancestor table* in German. Pedigree charts show lineage at a glance and are very helpful when researching on the road. These forms are very useful but not the only options.

Family Group Sheet

Husband

Name	Date	Place	Occupation
Item			Immigration
Christened			Notes/Location
Death			Military Service
Buried			Cause of Death
Married			Date of Will
Other Marriages			

Wife (include name)

Name	Date	Place	Occupation
Item			Immigration
Christened			Notes/Location
Death			Military Service
Buried			Cause of Death
Married			Date of Will
Other Marriages			

Other information (Records, Co., Census, Parents, etc.)

Children						
* Sex	Name	Date	Birth	Place	Date of first marriage	Date of Death Cause
MBF					Name of Spouse	Place

* Direct Ancestor
National Archives and Records Administration NARA's website is www.archives.gov NA Form 1413B (2013)

Ancestral Chart

Chart No. _____

Starts with individual on the left, branching to the right. Fields: Name, Place, Married, Death, Burial. Includes 'Name of Spouse' field.

National Archives and Records Administration NARA's website is <http://www.archives.gov> NA Form 1413A (2013)

There are many other forms or diagrams that can be helpful or confusing depending on how they are used. Some trees display ancestors, descendants and cousins. It's great for visualizing everyone at once, but it becomes confusing as more generations are added. A **Fan Chart** begins with the starting person in the middle and then each generation of ancestors or descendants appear in subsequent circles. These charts use more space than a standard chart, but it makes it easy to see what is missing.

Timeline charts provide the opportunity to compare ancestors whose lifetimes overlap, how they relate to historical events and when comparing the events of two people of the same name. Archives.com – Time-

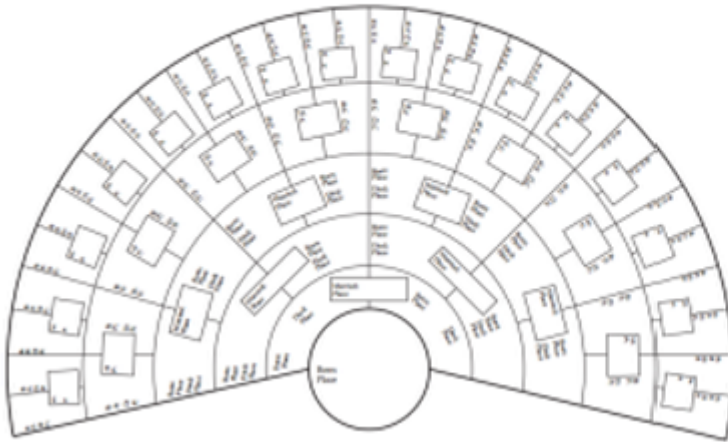
(Continued on page 6)

GSP NEWSLETTER

Finding your Pennsylvania Ancestors

Genealogical Society of Pennsylvania Newsletter

Archives Fan Chart



Timeline

Date	Event	Person	Place
1800	Birth ¹	Elijah VAN UVANSEE	Buckingham, Bucks, Pennsylvania, USA
1830	Birth	Susan SWOPE	
Between 1830 and Residence ²		Elijah VAN UVANSEE	Tax Records, Buckingham, Bucks, Pennsylvania, USA
1839	Tax es ²	Elijah VAN UVANSEE	Tax Records, Buckingham, Bucks, Pennsylvania, USA
1839	Taxes	Elijah VAN UVANSEE	Tax Records, Buckingham, Bucks, Pennsylvania, USA
20 Nov 1848	Marriage ¹	Elijah VAN UVANSEE and Susan SWOPE	Buckingham, Bucks, Pennsylvania, USA
1850	Occupation ²	Elijah VAN UVANSEE	Shenandoah, Plumstead, Bucks, Pennsylvania, USA
1850	Census ¹	Elijah VAN UVANSEE	Doylstown, Bucks, Pennsylvania, USA
3 Jan 1850	Census ¹	Susan SWOPE	
Between 1851 and Residence ²		Elijah VAN UVANSEE	Tax Records, Plumstead, Bucks, Pennsylvania, USA
1860	Tax es	Elijah VAN UVANSEE	Tax Records, Plumstead, Bucks, Pennsylvania, USA
1862	Tax es ¹	Elijah VAN UVANSEE	Tax Records, Plumstead, Bucks, Pennsylvania, USA
1868	Tax es ¹	Elijah VAN UVANSEE	Plumstead, Bucks, Pennsylvania, USA
1838	Taxes	Elijah VAN UVANSEE	Tax Records, Plumstead, Bucks, Pennsylvania, USA
1859	Tax es ¹	Elijah VAN UVANSEE	Tax Records, Plumstead, Bucks, Pennsylvania, USA
1860	Tax es ¹	Elijah VAN UVANSEE	Tax Records, Plumstead, Bucks, Pennsylvania, USA
1861	Military	Elijah VAN UVANSEE	Philadelphia, Pennsylvania, USA
1870	Living ¹	Elijah VAN UVANSEE	Buckingham, Bucks, Pennsylvania, USA
1870	Census ²	Elijah VAN UVANSEE	Lambertville, Bucks, Pennsylvania, USA
15 Aug 1870	Census ²	Susan SWOPE	Lambertville, Bucks, Pennsylvania, USA

lines as Genealogical Research Tools <https://www.archives.com/experts/richard-l-diane/timelines-as-genealogical-research-tools.html>



Hourglass Trees show the center person's ancestors above and descendants below. **Kinship Reports** include an alphabetical list of names and each person's relationship to a selected individual. A kinship report lets you quickly see how anyone in your file is related. The **Tiny Tafel**, a summary of surnames, is interesting as it shows the Soundex code for each surname. The Soundex Code groups similarly spelled names along with the range of years these individuals were born which helps to match surnames with different spellings.

Family trees can also be custom designed representations of a family's lineage. There are many graphical options online to choose from.

Genealogy Programs can generate a variety of charts from entered data. The available reports and output options are different with each program, so you would want to review the available features.

There are many sources online to download chart templates.

- ◆ National Archives. <https://www.archives.gov/research/genealogy/charts-forms>
- ◆ Family Tree: <https://www.familytreemagazine.com/freeforms/basicforms/>
- ◆ BYU Family History Library: <https://sites.lib.byu.edu/familyhistory/print-forms-research-helps/>
- ◆ Family Search: https://www.familysearch.org/wiki/en/Step_5._Organize_your_information
- ◆ Microsoft: <https://templates.office.com> Family Trees

Printable charts are not to be confused with the "Online Trees" used for sharing with others on sites like Ancestry, Family Search and My Heritage.

Nancy Janyszeski, Treasurer, GSP

October 2018

GSP NEWSLETTER

Finding your Pennsylvania Ancestors

Genealogical Society of Pennsylvania Newsletter

VOL. 1.

No. 4.

Publications

of the

Genealogical Society

of

Pennsylvania

December, 1898

Miscellany No. 2

PHILADELPHIA
PRINTED FOR THE SOCIETY BY
THE WICKERSHAM PRINTING CO., LANCASTER, PA.

GSP NEWSLETTER

Finding your Pennsylvania Ancestors

Genealogical Society of Pennsylvania Newsletter

CONTENTS.

	PAGE
First Annual Report, March 6, 1893 (reprint)	137
Second Annual Report, March 5, 1894 (reprint)	144
In Memoriam—Thomas M. Cleeman	151
Fifth Annual Report, March 1, 1897 (original)	155
Sixth Annual Report, March 7, 1898 (original)	159
Officers of the Society	163
List of Members	164
Landholders of Philadelphia County, 1734	166
Divorces granted by the Supreme Court of Pennsylvania, 1787-1801 . .	185
Genesis of the Board of Health and Vital Statistics in Pennsylvania . . .	193
Bucks County Wills, 1684-1693	198
Earliest Burial Records of the Board of Health, 1803	225
Early Minutes of Philadelphia Monthly Meeting, 1682	251
Obituary of L. Taylor Dickson, Vice-President of the Society	299
Index to Volume I	301

GSP NEWSLETTER

Finding your Pennsylvania Ancestors

Genealogical Society of Pennsylvania Newsletter

DIVORCES GRANTED BY THE SUPREME COURT
OF PENNSYLVANIA FROM DECEMBER,
1785, UNTIL 1801.

John Brice, of Philadelphia, from Sarah Brice (maiden name Bernard); married 26 November, 1774 ; divorced 13 December, 1785.

Anthony Felix Weibert from Althea Wibert ; married 5 February, 1782 ; at marriage was the widow of John Garrison ; divorced in 1788.

Mary Cordell from James Cordell, of Germantown ; married 18 January, 1780 ; divorced 24 September, 1787.

William Keith, of Philadelphia, from Ann Keith (maiden name Burgess); married 27 August, 1785 ; divorced 3 September, 1791.

Mary Steele from William Steele, of Germantown ; in 1788 had been married "upwards of twenty years;" divorced 2 January, 1789.

John Dicks, of Chester, Pa., from Mary Dicks (maiden name Culin) married 14 June, 1763 ; divorced 2 April, 1789.

Sophia Paulus from Peter Paulus ; married "about the month of October, 1783 ;" divorced 24 September, 1788.

Joseph Wright, of Lancaster county, from Catharine Wright, maiden name Leek ; married 8 September, 1784 ; divorced 24 September, 1788.

Margaret Erben (maiden name Bickley), of Philadelphia, from Adam Erbin, married 25 September, 1792 ; divorced 2 January, 1790.

Sarah Bossler (daughter of John Garber) from Henry Bossler, of Cumberland county ; married "about" December, 1781 ; divorced 2 January, 1790.

(185)

GSP NEWSLETTER

Finding your Pennsylvania Ancestors

Genealogical Society of Pennsylvania Newsletter

NEW GSP PUBLICATIONS

In the GSP Store

GSP is pleased to announce the reprinting of *Pennsylvania German Roots Across The Ocean*, Marion Egge, editor. This was first published in 2000 by The Genealogical Society of Pennsylvania, and since then copies have become scarce and in demand. Thus, it has been reprinted and is available for sale through our website store at \$50 and free shipping.

Also available now through the GSP Store is *Volume 3 County of Philadelphia School Children Enumeration 1811-1816*. This publication includes High Street, Lower Delaware, North Ward, North Mulberry, South Mulberry available along with Volume 1 and Volume 2. Each are \$20 and free shipping.

<https://squareup.com/store/genealogical-society-of-pennsylvania>

On the GSP Website

There is a new Resource Guide now available on Public Collection Section - The National Archives <https://genpa.org/publications/nationalarchives-nara-handout/>.

In addition, the Resource/Research Guides for all 67 Pennsylvania Counties are free to view, print or download from the Public Collections page. <https://genpa.org/public-collections/>



GSP THANKS YOU

Member William Martin has graciously donated his collection of genealogy books and notes to the GSP Library. We appreciate his thinking of the organization but, more importantly, of other researchers who will benefit from his generosity. Thank you!

The GSP Library accepts books in good condition, related to Pennsylvania Research, as donations. Please contact us before sending so that our office can plan the acquisition with you.

Carol M. Sheaffer, President

GSP NEWSLETTER

Finding your Pennsylvania Ancestors

Genealogical Society of Pennsylvania Newsletter

Pennsylvania Featured County - Armstrong

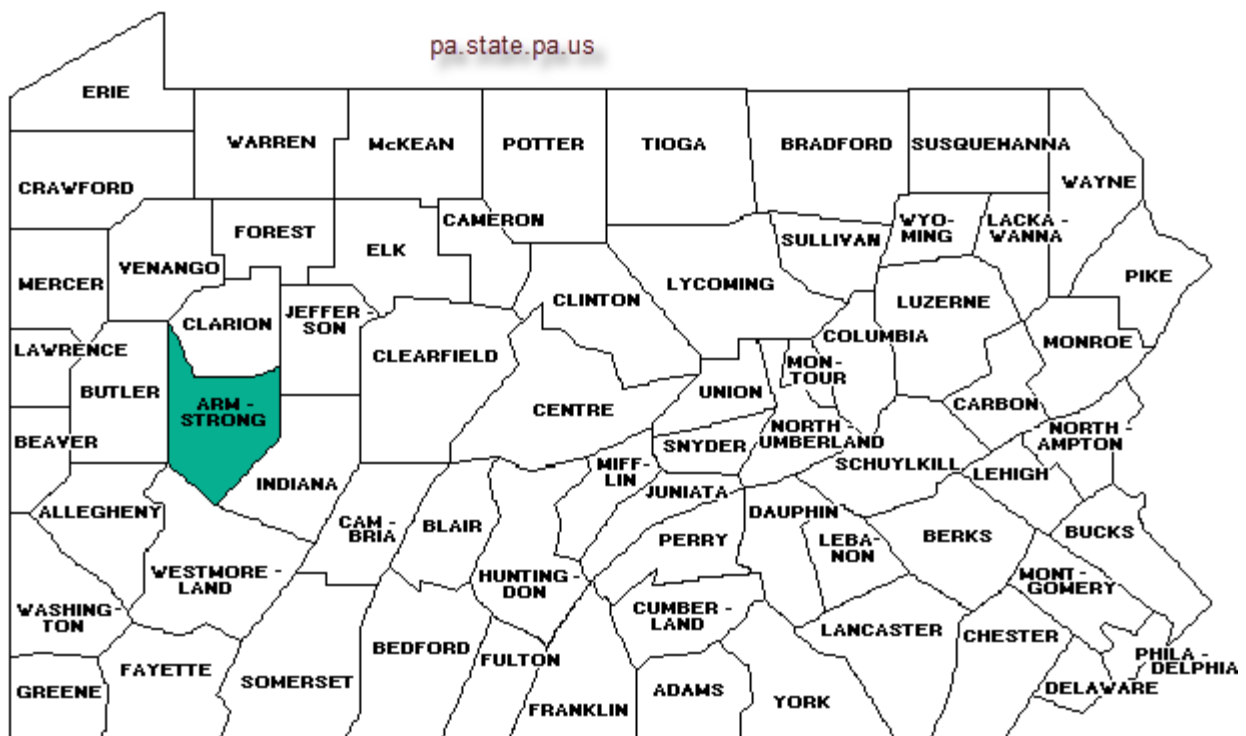
Pennsylvania became a state December 12, 1787. There are 67 counties and 2561 municipalities. Armstrong County was established March 12, 1800 from parts of Allegheny, Lycoming and Westmoreland Counties. The county seat is Kittanning.

Microfilm copies of county records along with the tools to help research county records are available at the [Pennsylvania State Archives - PHMC > Archives > Research Online > County and Municipal Records](#)

Finding Family and Historical Records in Armstrong County

- I. <http://www.co.armstrong.pa.us/departments/elected-officials/reg-rec>
- II. https://www.familysearch.org/wiki/en/Armstrong_County,_Pennsylvania_Genealogy
Birth and Death records, Marriage records, Census records, Civil and Criminal court records and Deeds
- III. History of Armstrong County - <https://archive.org/details/historyofarmstro01smit>
- IV. The Genealogical Society of Pennsylvania Resource Guides— <https://genpa.org/public-collections/pennsylvania-resources/>
- V. Armstrong County Historical Museum and Genealogical Society Inc. <http://achmgs.yolasite.com/>
- VI. Chronology of Pennsylvania Counties: <http://www.buckscountyhistory.com/chronological.htm>

Angie Indik, GSP Board member



GSP NEWSLETTER

Finding your Pennsylvania Ancestors

Genealogical Society of Pennsylvania Newsletter

GSP has a number of volunteer opportunities, at home, in the office or on location.

E-mail at gsp.deborah@gmail.com or editor@genpa.org or call the office 267-686-2296

Newsletter Committee: Joseph Roby, Copy Editor, Nancy Janyszeski, Carol M. Sheaffer

Share your Research or Family History Story



Briefly share amusing, touching, unusual, interesting or tragic stories you have unearthed in your family research -editor@genpa.org

GSP RESEARCH

GSP does not offer phone consultations. We require that all research requests be in writing. Request Form – [PDF Document](#)

Check the Research page on our website for additional information. <https://genpa.org/research/>

E-mail research requests to info@genpa.org

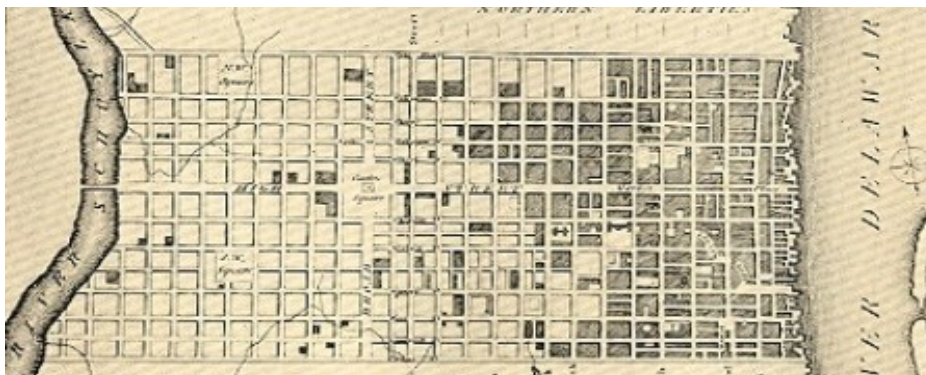
The GSP **Pennsylvania Resource Guides** can help answer where to find some Pennsylvania research sources. <https://genpa.org/public-collections/pennsylvania-resources/>

GSP Executive Board

President: Carol M. Sheaffer MD ~ Vice-President: Nancy C Nelson

Secretary: Valerie Lutz ~ Treasurer: Nancy Janyszeski

Board Members



The Genealogical Society of Pennsylvania
2100 Byberry Road—Suite 111
Philadelphia PA 19116 267.686.2296
editor@genpa.org **JOIN GSP**